

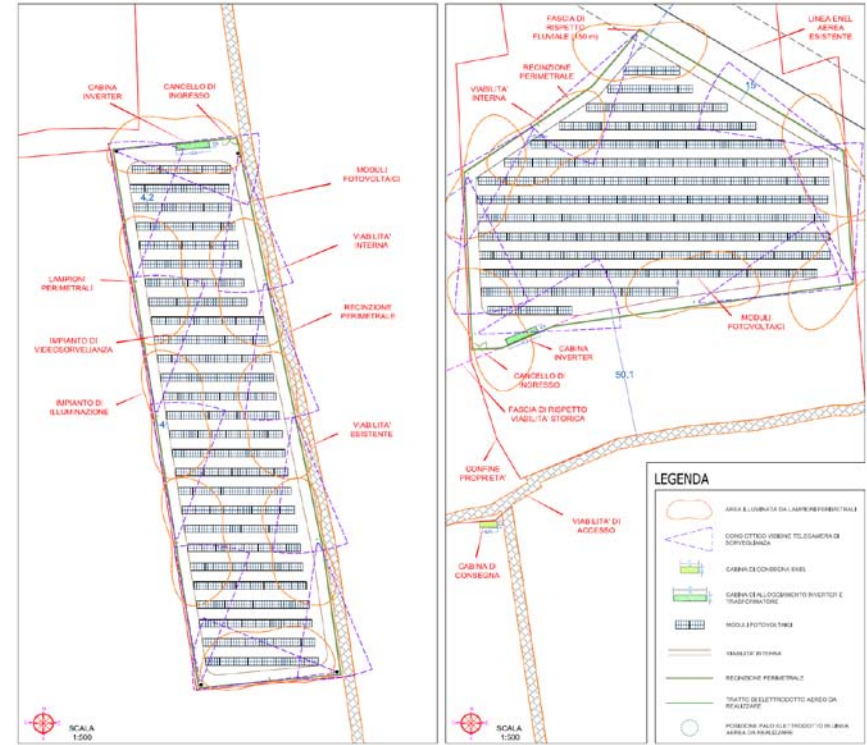
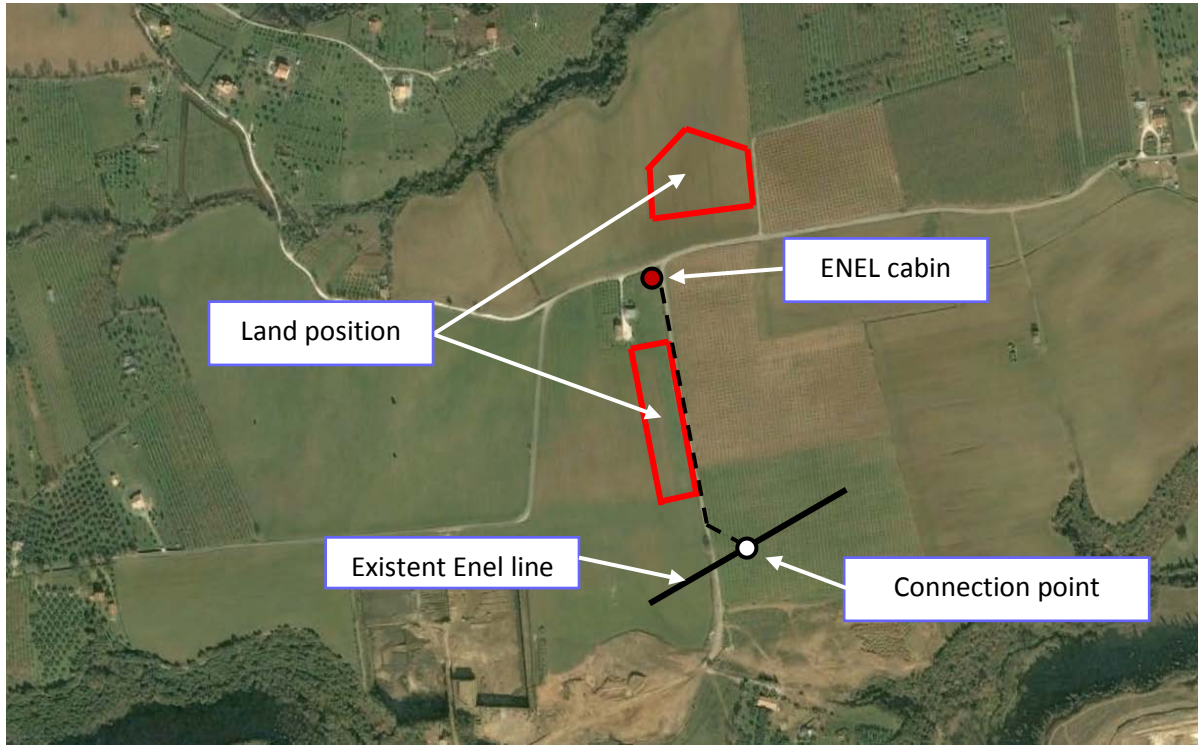
Project description - Gross capacity: 998,8 kW

Municipality:

GALLESE (VT)

Denomination:

BALESTRA - 31



Location

Coordinates: 42°21'26" N 12°25'39" E

Register: Fg. 31 P.lla 332 Fg. 32 P.lle 39 - 65 - 136

Land agreement

1° Surface: 2'07'08 Annual Rent: 12'000 €/year

2° Surface: 1 ha Sale price: 40.000 €

Signed on: 25/06/10 Duration: 21 years + 5

Servitù crossing line

Signed on: 13/12/2010

Compensation: 10.000 €

ENEL connection (STMG)

Requested on: 5/02/10

Obtained on: 14/04/2010

Accettated on: 22/04/10

ID Tica: T0060913

Distance connection point: 450 m

Project Autorization (AU)

Province AU instance 20/05/2010

1st Conference services on: 1/09/2010

Authorization Order issued on: 31/05/2011